

PART OF SEC. 31-32, T.7N., R.3E., S.L.B. & M.
EVERGREEN PARK SUBDIVISION NO. 1

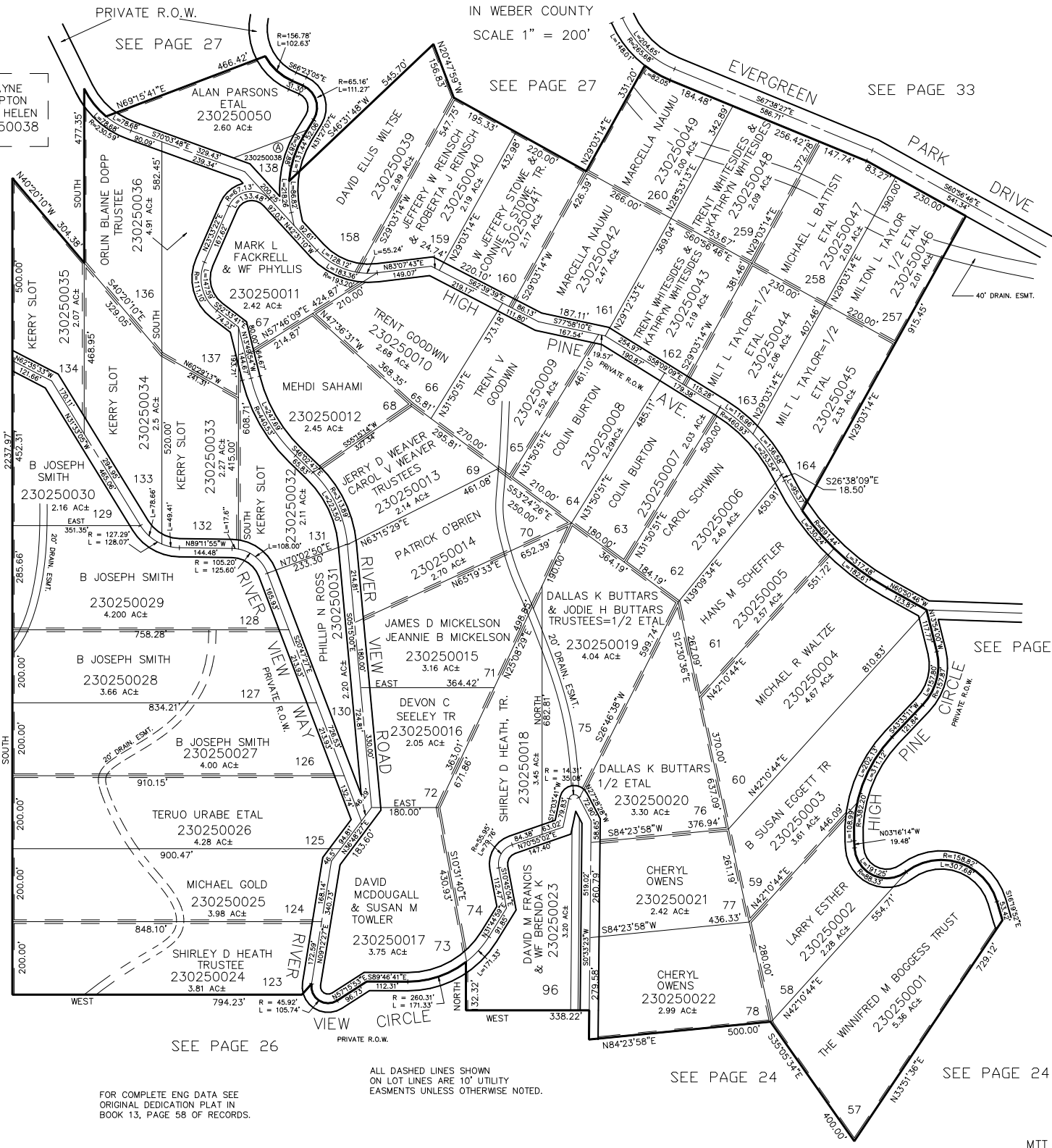
TAXING UNIT: 58

IN WEBER COUNTY
SCALE 1" = 200'

A
DWAYNE
COMPTON
& WF HELEN
230250038

SEE PAGE 33

23



SEE PAGE 26

ALL DASHED LINES SHOWN
ON LOT LINES ARE 10' UTILITY
EASEMENTS UNLESS OTHERWISE NOTED.

FOR COMPLETE ENG DATA SEE
ORIGINAL DEDICATION PLAT IN
BOOK 13, PAGE 58 OF RECORDS.

SEE PAGE 24

SEE PAGE 24